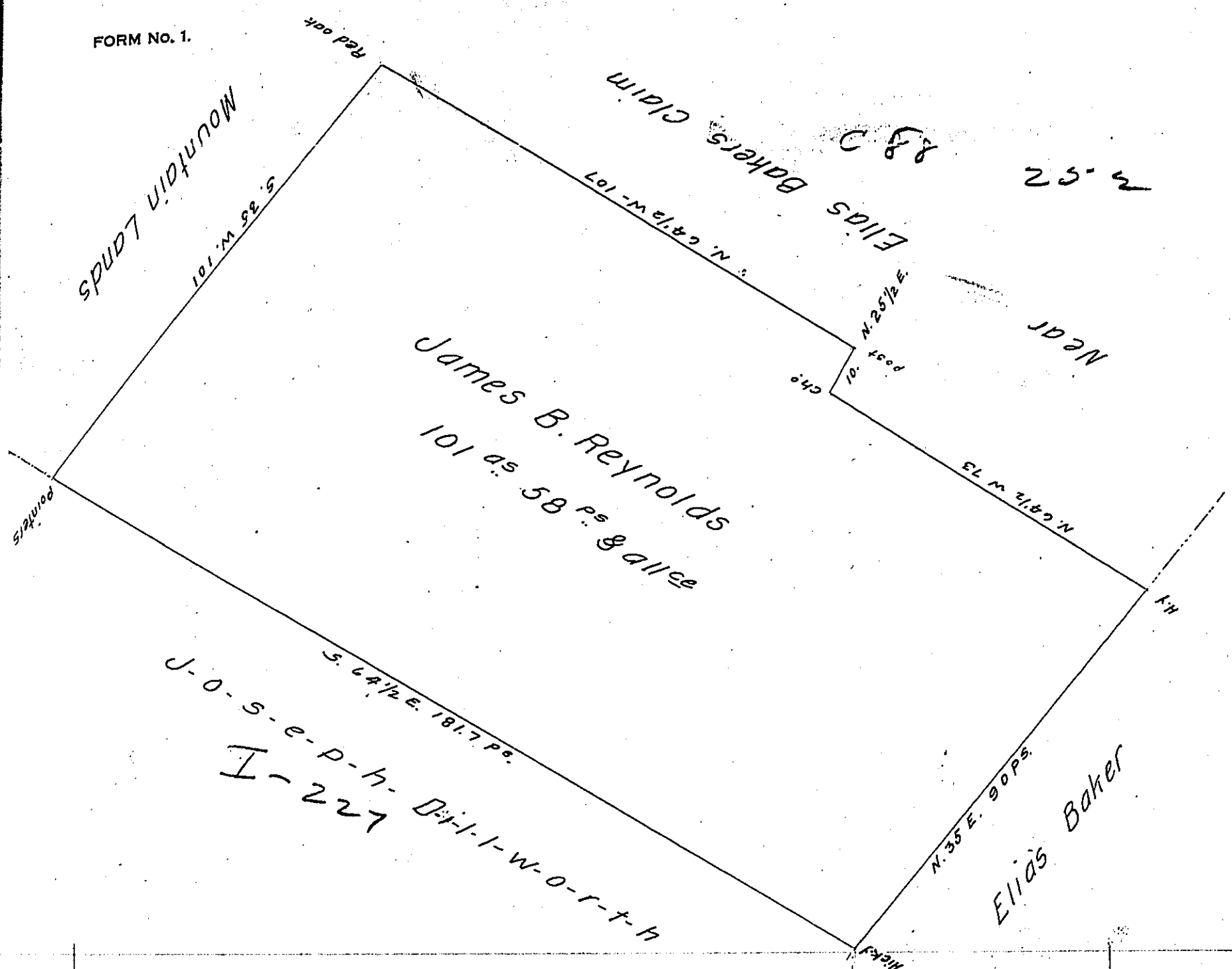


FORM NO. 1.



Situate in Logan Township Blair County. Containing one hundred and one Acres fifty-eight perches and Allowance of Six per cent for roads &c. Surveyed the 18th day of October A.D. 1862. in pursuance of a Warrant granted to James B. Reynolds dated 29th day of September A.D. 1860.

To Henry Souther Esquire } James L. Gwin
 Surveyor Gen! } C.S.

Note. the above may interfere with Surveys made for W^m Barton. in 1794.

Variation 3° W.

J. L. G.

IN TESTIMONY that the above is a copy of the original remaining on file in the Department of Internal Affairs of Pennsylvania, made conformably to an Act of Assembly approved the 16th day of February 1833, I have hereunto set my hand and caused the Seal of said Department to be affixed at Harrisburg, this twenty sixth day of August 1907.

Henry Howard
 Secretary of Internal Affairs.